



**SKYLINE  
BUILDERS**

A Smile on Your Face  
Is Our Moto



# VRINDAVAN PALACE



**Registered Address :** Malancha Para, Near Life Line Nursing Home,  
Ward No - 03, Bishnupur, Bankura, WB - 722122

**Mobile Number :** 97349 89911 | 9434216754 | 7908308006

**Email :** slbmsme21@gmail.com | **Website :** www.skylinebuilder.co.in

# DEVELOPER PROFILE

Engineering Excellence | Trusted Quality | Lasting Value

We are a reputed real estate and infrastructure development group based in Bishnupur, Bankura, West Bengal, recognized for our strong engineering expertise and uncompromising quality standards. Every project we deliver reflects durability, safety, and thoughtful design, creating assets that stand the test of time.

## Residential Development

- ◆ 4 Residential Apartment Projects – Bishnupur
- ◆ 2 Residential Apartment Projects – Purbo Medinapore

Our residential developments are built using premium materials, superior workmanship, and modern construction practices, ensuring comfort, safety, and long-term reliability.

## Infrastructure & Heavy Civil Works

We specialize in heavy civil and large-scale infrastructure projects, including:

- ◆ Pile foundations & piling works
- ◆ Bridge construction
- ◆ Railway and industrial infrastructure



## Key Achievement

Successful construction of two railway bridges on the Kharagpur–Panskura 3rd Line (Haur–Khirai Section) under South Eastern Railway, highlighting our expertise in complex and high-responsibility infrastructure works.

## Manufacturing Unit

Electric / Concrete Pole Manufacturing Unit – Bankura

We operate a dedicated electric and concrete pole manufacturing facility, supplying high-quality poles for power and infrastructure projects with strict quality control and compliance to industry standards.



## Major Clients & Associations

- ◆ Haldia Dock Complex
- ◆ Larsen & Toubro (L&T) – Registered Vendor
- ◆ Apeejay Surendra Group
- ◆ North Frontier Railway (Bhartia Group)
- ◆ Keleghai River Project (Under MBL)
- ◆ Indian Oil Corporation (under Punj Lloyd – RMC & construction works)



## Social Responsibility & Leadership

We believe true development goes beyond construction.

- ◆ Bishnupur Gurukul Public School, Katandhar Run by Skyline Builders
- ◆ Tree plantation drives & social awareness programs
- ◆ Life Member – Mohun Bagan Athletic Club
- ◆ Member – Bishnupur Thana Mata Urbi Organizing Committee



## Educational Initiatives (Since 2014)

We have been running alternative educational institutes since 2014, focused on the overall and holistic development of children across Purbo Medinapore.

## Group & Trust

Electric Pole Manufacturers  
Puabagan, Bankura, West Bengal  
*Operated by Skyline Builders*

**Company Established Since 1999**

Our Promise

*We don't just build structures—we build trust, strength, and lasting value.*

**“A smile on your face is our motto.”**

# PREVIOUS WORKS



## Project : Raikunj

Address : Jhapormore

Status : Completed

## Project : Baikunthavilla

Address : Malancha Para

Status : Completed



## Project : Banalata

Address : Ukilpara

Status : Completed

## Project : Barsana Palace

Address : Jhapormore

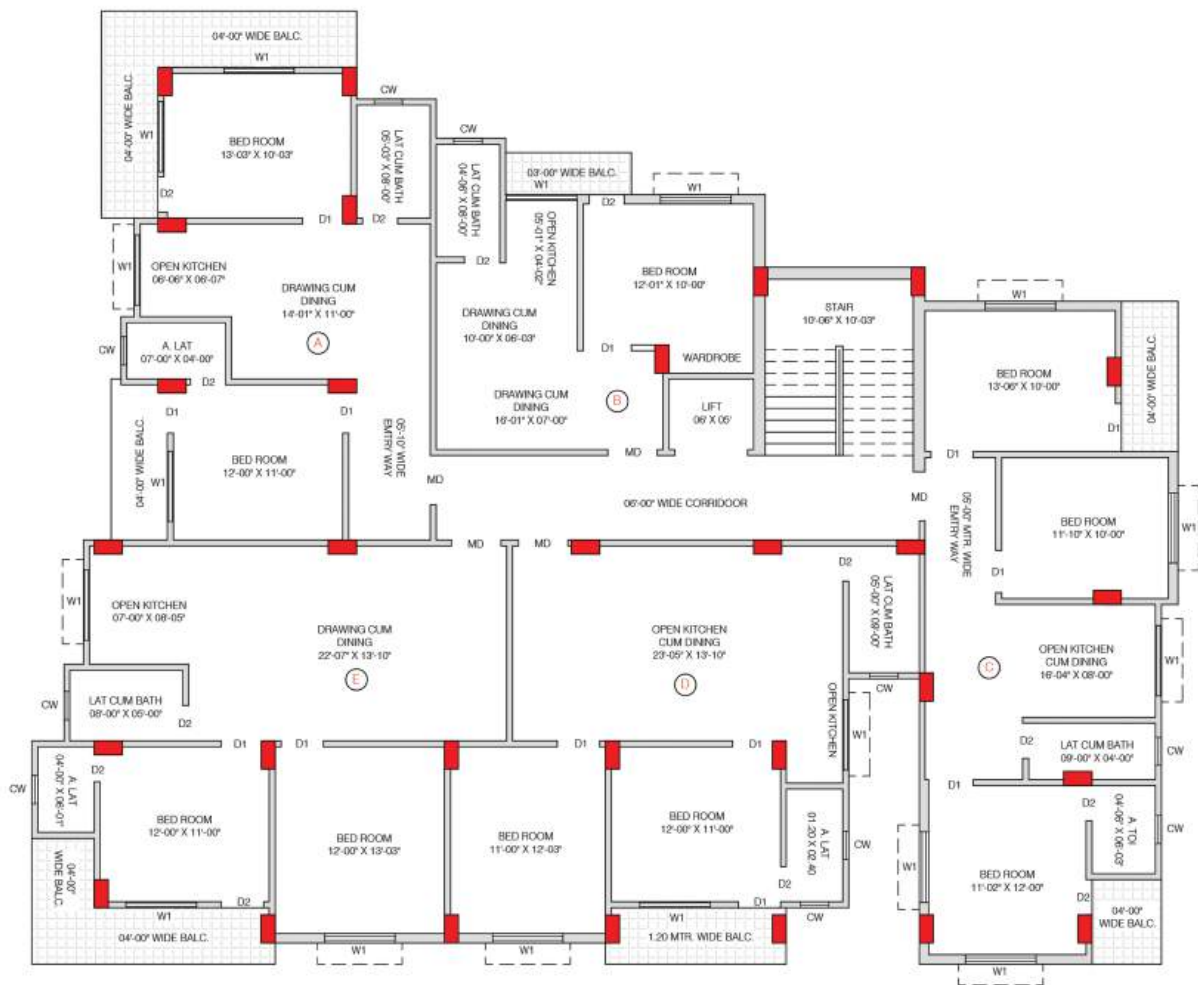
Status : Hand Over on March 2026



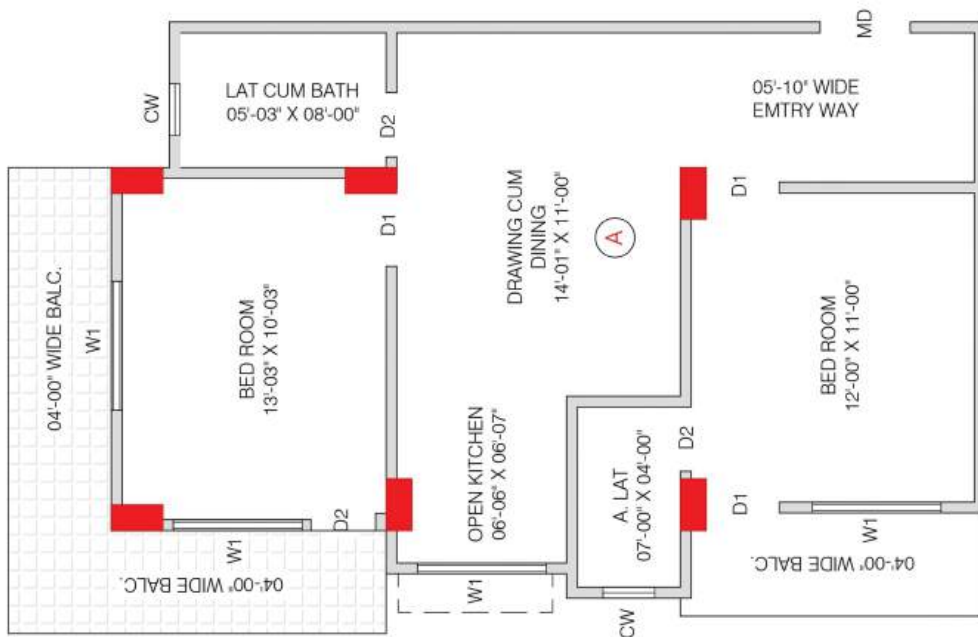


# TYPICAL FLOOR PLAN

(SCALE = 1:100)

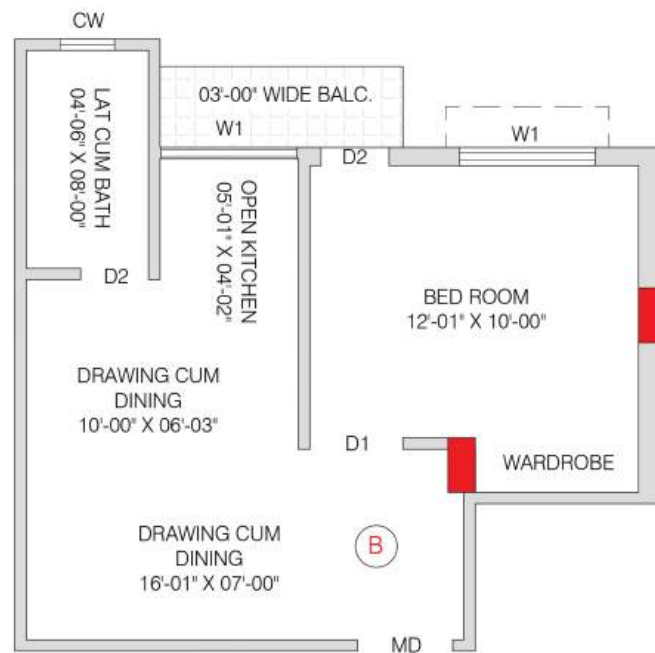


# FLAT - A



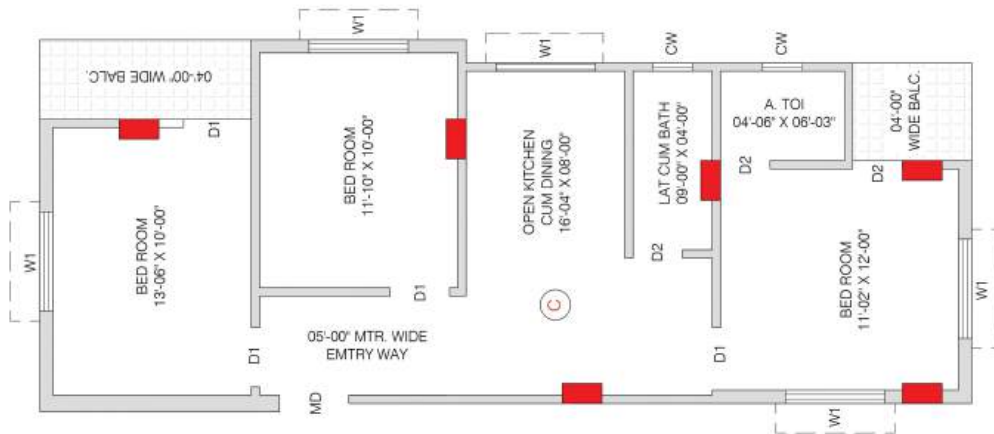
FLAT TYPE	COVERED AREA	STAIR LIFT LOBBY	BUILD-UP AREA	SBA 25%	Saleable Area
A	687.35 Sq. Ft	83.82 Sq. Ft	771.17 Sq. Ft	192.78 Sq. Ft	963.96 Sq. Ft

# FLAT - B



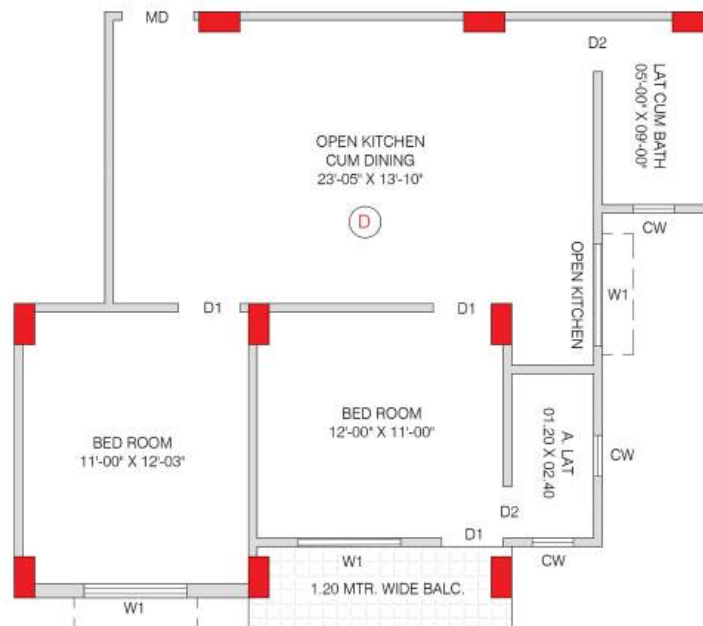
FLAT TYPE	COVERED AREA	STAIR LIFT LOBBY	BUILD-UP AREA	SBA 25%	Saleable Area
<b>B</b>	<b>410.06</b> Sq. Ft	<b>50.00</b> Sq. Ft	<b>460.07</b> Sq. Ft	<b>115.02</b> Sq. Ft	<b>575.09</b> Sq. Ft

# FLAT - C



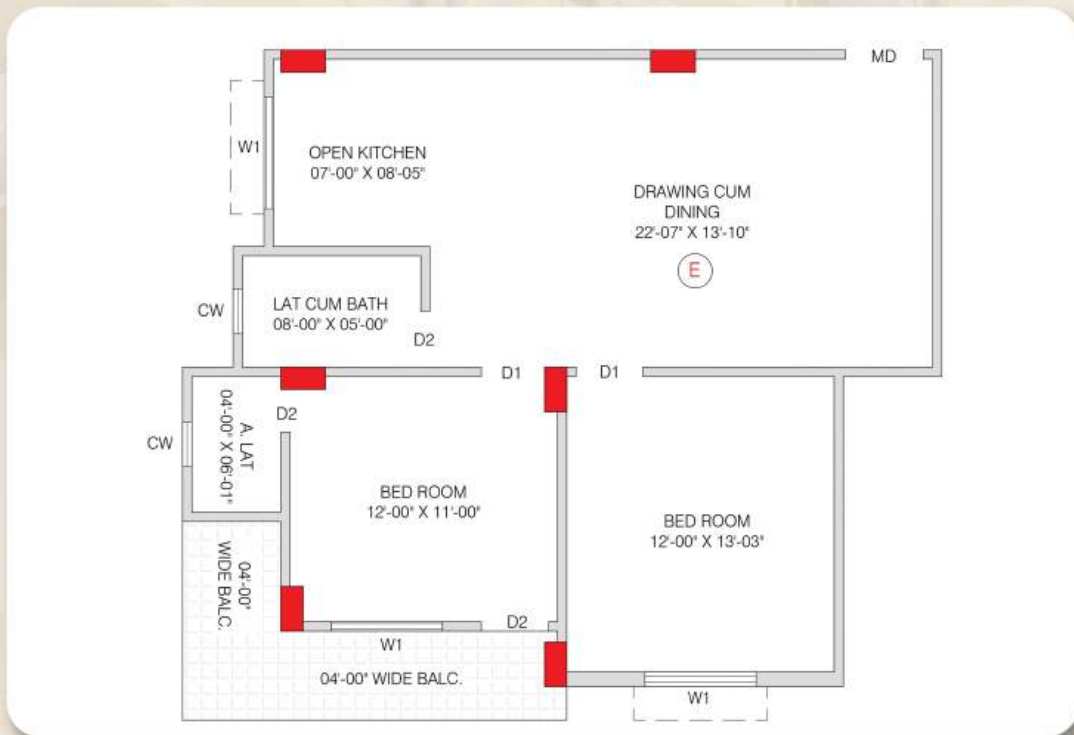
FLAT TYPE	COVERED AREA	STAIR LIFT LOBBY	BUILD-UP AREA	SBA 25%	Saleable Area
C	803.66 Sq. Ft	98.00 Sq. Ft	901.67 Sq. Ft	225.42 Sq. Ft	1127.08 Sq. Ft

# FLAT - D



FLAT TYPE	COVERED AREA	STAIR LIFT LOBBY	BUILD-UP AREA	SBA 25%	Saleable Area
D	783.01 Sq. Ft	95.48 Sq. Ft	878.49 Sq. Ft	219.62 Sq. Ft	1098.11 Sq. Ft

# FLAT - E



FLAT TYPE	COVERED AREA	STAIR LIFT LOBBY	BUILD-UP AREA	SBA 25%	Saleable Area
E	853.91 Sq. Ft	104.13 Sq. Ft	958.04 Sq. Ft	239.51 Sq. Ft	1197.55 Sq. Ft

# AMENITIES

- 24 X 7 POWER BACKUP
- 24 X 7 SECURITY
- 24 X 7 WATER SUPPLY
- STAINLESS STEEL FINISH FULLY AUTOMATIC MODERN LIFT
- COMPLETE WATER PROOF BASEMENT PARKING
- 2 SIDE UNINTERRUPTED CAR DRIVE-WAY
- GUEST PARKING
- TEMPLE
- LIGHTING ARRESTER





## **SPECIFICATION**

- **STRUCTURE –**  
Earthquake Resistant R.C.C  
Frame Structure
- **Balconies –**  
Glass Railing with SS Frame /  
Anodised Aluminium Frame
- **Doors –**  
WPC Frame for Bathroom,  
Modern Flush Door for rooms
- **Main Door –**  
Tata Pravesh
- **Window –**  
UPVC / Domal
- **Tiles –**  
Kajaria or Equivalent Double  
Charged Vitrified
- **Fire Protection –**  
Apar Anusakti Fire Protection
- **Sanitary & Plumbing –**  
Hindware&Parryware
- **Damp Proofing**

**Building Plan, Designed and Supervised By :**



**THE DREAM PROJECT**  
A CIVIL ENGINEERING CONSULTANCY

**The Dream Project**  
**Engg Kishalay Roy**

- 📍 Hazrapara, Bishnupur, Bankura,
- ☎ 7001699498 / 9614867640
- ✉ [thedreamprojectbsp@gmail.com](mailto:thedreamprojectbsp@gmail.com)  
[kishalayroyce@gmail.com](mailto:kishalayroyce@gmail.com)