

Adishakti

Enclave



Registered Address :
Malancha Para, Near Life
Line Nursing Home, Ward No - 03,
Bishnupur, Bankura, WB - 722122

Mobile Number :
9734989911 | 7908308006

Website : www.skylinebuilder.co.in

Email : slbmsme21@gmail.com

SKYLINE BUILDERS
A SMILE ON YOUR FACE IS OUR MOTTO.

BANK LOAN APPROVED

DEVELOPER PROFILE

Engineering Excellence | Trusted Quality | Lasting Value

We are a reputed real estate and infrastructure development group based in Bishnupur, Bankura, West Bengal, recognized for our strong engineering expertise and uncompromising quality standards. Every project we deliver reflects durability, safety, and thoughtful design, creating assets that stand the test of time.



Residential Development

- ◆ 4 Residential Apartment Projects – Bishnupur
- ◆ 2 Residential Apartment Projects – Purbo Medinapore

Our residential developments are built using premium materials, superior workmanship, and modern construction practices, ensuring comfort, safety, and long-term reliability.

Infrastructure & Heavy Civil Works

We specialize in heavy civil and large-scale infrastructure projects, including:

- ◆ Pile foundations & piling works
- ◆ Bridge construction
- ◆ Railway and industrial infrastructure



Key Achievement

Successful construction of two railway bridges on the Kharagpur–Panskura 3rd Line (Haur–Khirai Section) under South Eastern Railway, highlighting our expertise in complex and high-responsibility infrastructure works.

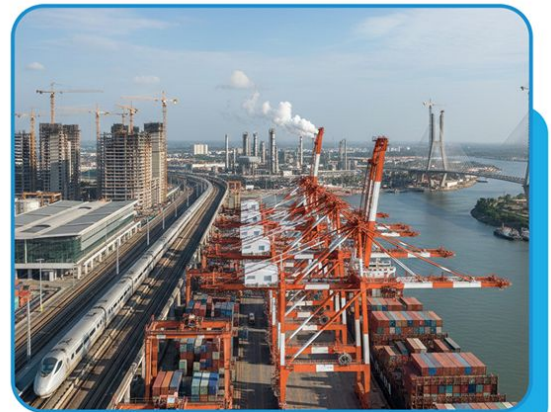
Manufacturing Unit

Electric / Concrete Pole Manufacturing Unit – Bankura

We operate a dedicated electric and concrete pole manufacturing facility, supplying high-quality poles for power and infrastructure projects with strict quality control and compliance to industry standards.

Major Clients & Associations

- ◆ Haldia Dock Complex
- ◆ Larsen & Toubro (L&T) – Registered Vendor
- ◆ Apeejay Surendra Group
- ◆ North Frontier Railway (Bhartia Group)
- ◆ Keleghai River Project (Under MBL)
- ◆ Indian Oil Corporation (under Punj Lloyd – RMC & construction works)



Social Responsibility & Leadership

We believe true development goes beyond construction.

- ◆ Bishnupur Gurukul Public School, Katandhar Run by Skyline Builders
- ◆ Tree plantation drives & social awareness programs
- ◆ Member – Bishnupur Thana Mata Urbi Organizing Committee



Educational Initiatives (Since 2014)

We have been running alternative educational institutes since 2014, focused on the overall and holistic development of children across Purbo Medinapore.

Group & Trust

Electric Pole Manufacturers
Puabagan, Bankura, West Bengal
Operated by Skyline Builders

Company Established Since 1999

Our Promise

We don't just build structures—we build trust, strength, and lasting value.

“A smile on your face is our motto.”

PREVIOUS WORKS



Project : Raikunj

Address : Jhapormore

Status : Completed

Project : Baikunthavilla

Address : Malancha Para

Status : Completed



Project : Banalata

Address : Ukilpara

Status : Completed

Project : Barsana Palace

Address : Jhapormore

Hand Over Starts : March 2026



Project : Vrindavan Palace

Address : Malancha Para

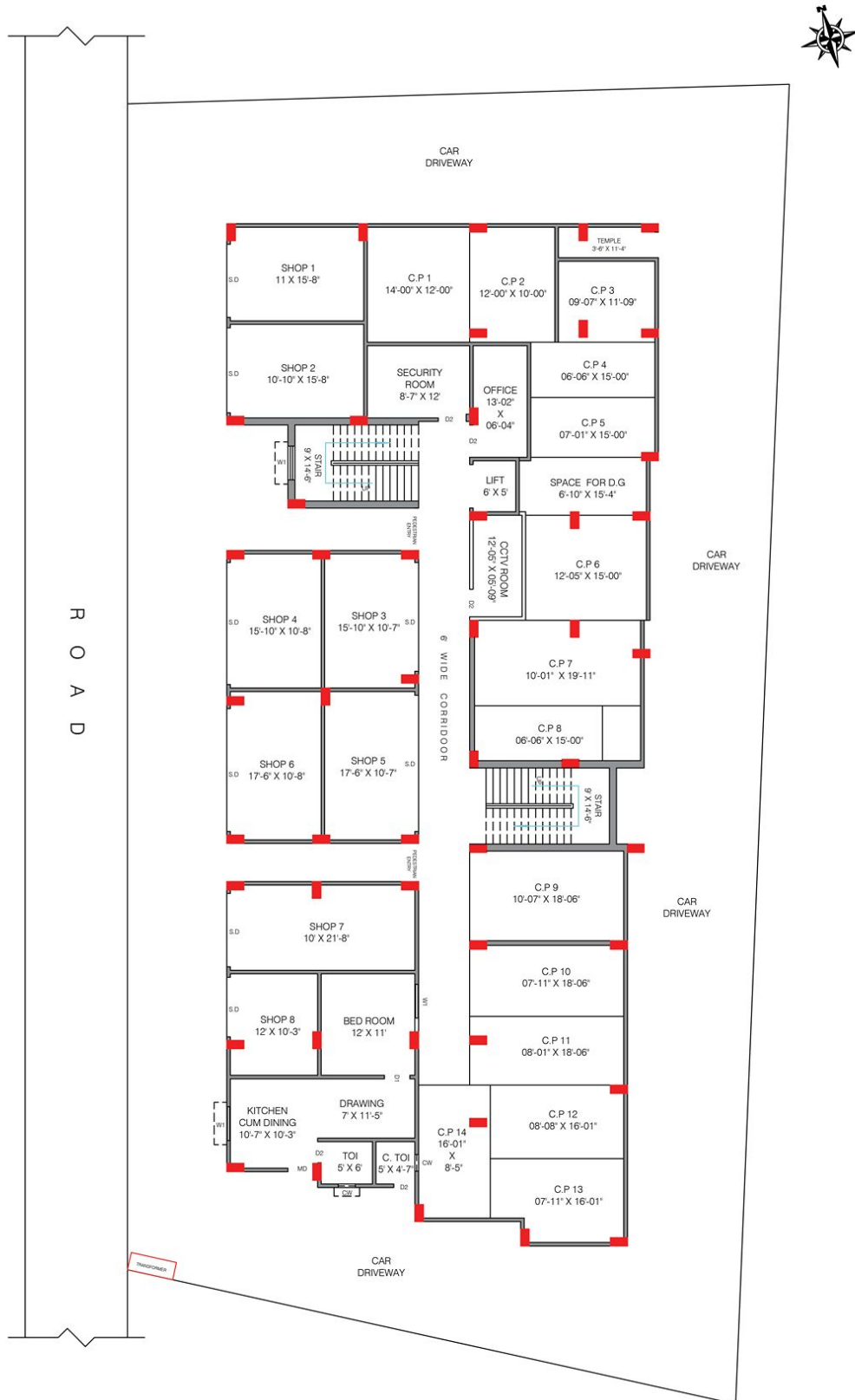
Status : Upcoming

ELEVATION OF BUILDING

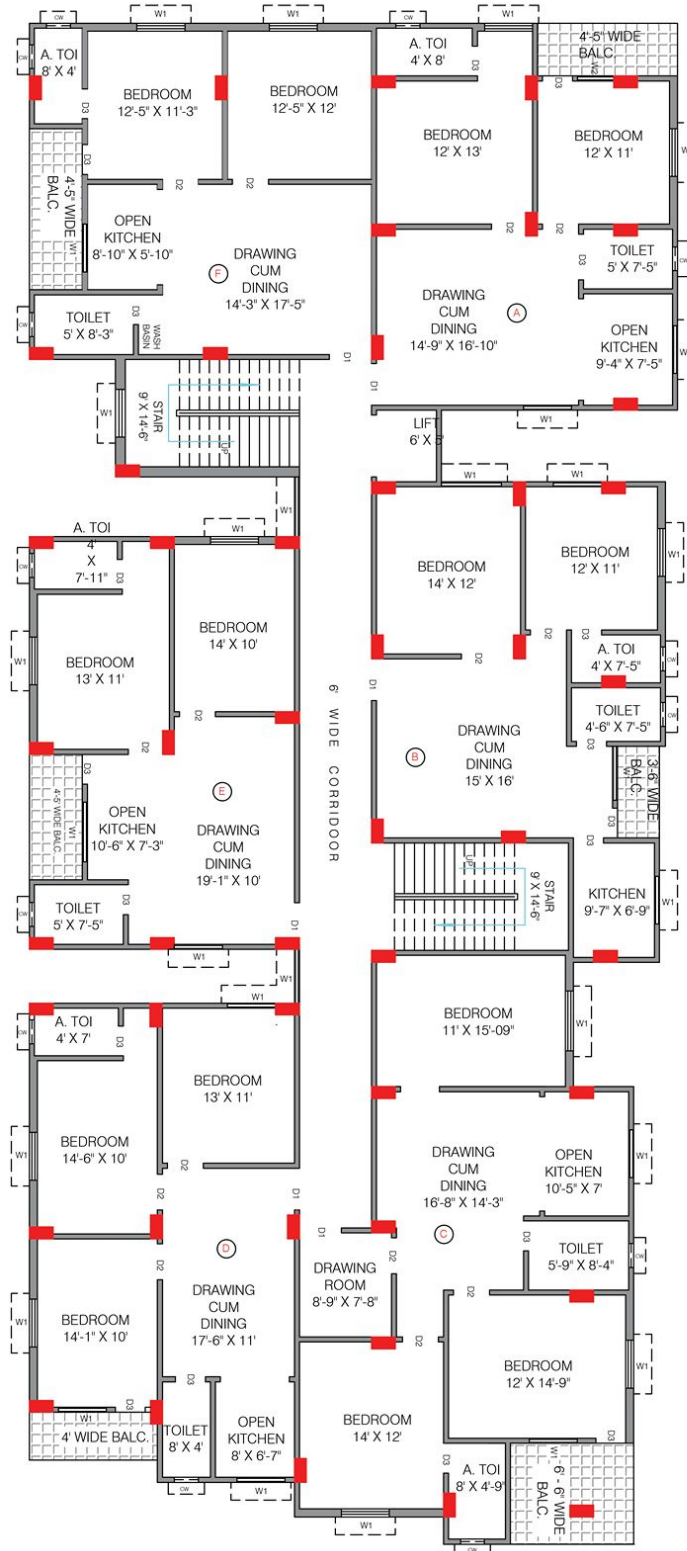


GROUND FLOOR PLAN

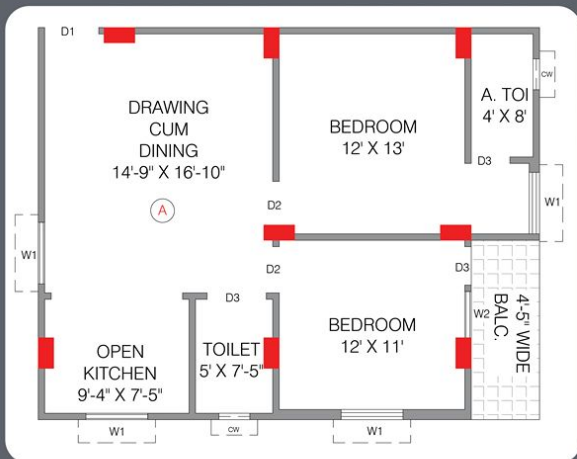
(SCALE = 1:100)



TYPICAL FLOOR PLAN (SCALE 1:100)



FLAT A



▶ **TYPE**
2 B.H.K.

▶ **DIRECTION**
NORTH-EAST

▶ **CARPET AREA**
706.60 SQ.FT.

▶ **COVERED AREA**
792.58 SQ.FT.

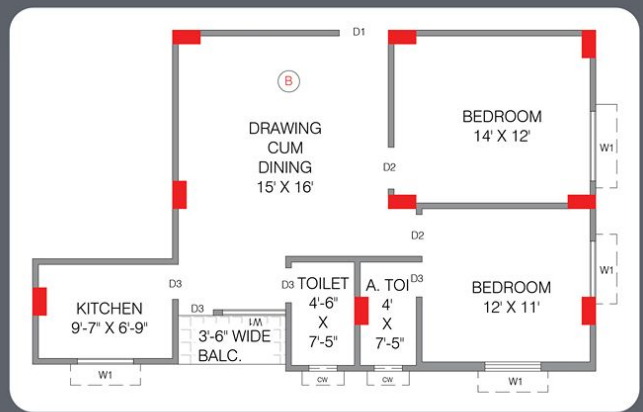
▶ **COMMON AREA**
121.00 SQ.FT.

▶ **BUILD-UP AREA**
913.58 SQ.FT.

▶ **SBA 25%**
228.39 SQ.FT.

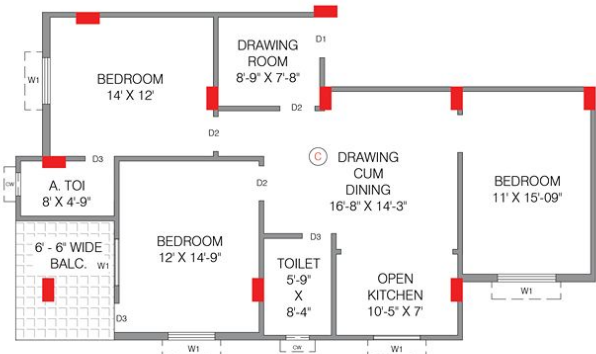
▶ **SALEABLE AREA**
1141.97 SQ.FT.

FLAT B



- ▶ **TYPE**
2 B.H.K.
- ▶ **DIRECTION**
EAST
- ▶ **CARPET AREA**
707.25 SQ.FT.
- ▶ **COVERED AREA**
773.97 SQ.FT.
- ▶ **COMMON AREA**
118.16 SQ.FT.
- ▶ **BUILD-UP AREA**
892.12 SQ.FT.
- ▶ **SBA 25%**
223.03 SQ.FT.
- ▶ **SALEABLE AREA**
1115.15 SQ.FT.

FLAT C



▶ **TYPE**
3 B.H.K.

▶ **DIRECTION**
SOUTH-EAST

▶ **CARPET AREA**
979.26 SQ.FT.

▶ **COVERED AREA**
1123.13 SQ.FT.

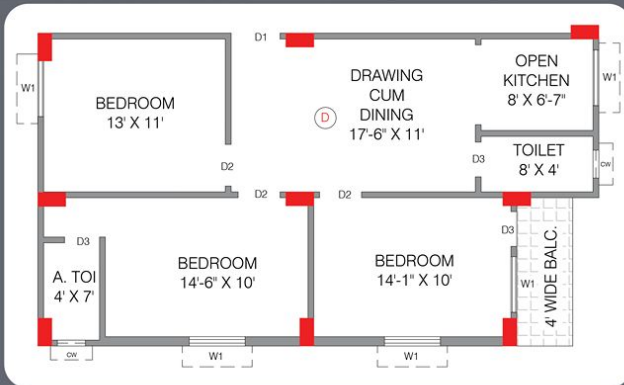
▶ **COMMON AREA**
171.46 SQ.FT.

▶ **BUILD-UP AREA**
1294.59 SQ.FT.

▶ **SBA 25%**
323.65 SQ.FT.

▶ **SALEABLE AREA**
1618.24 SQ.FT.

FLAT D



▶ **TYPE**
3 B.H.K.

▶ **DIRECTION**
SOUTH-WEST

▶ **CARPET AREA**
757.07 SQ.FT.

▶ **COVERED AREA**
850.79 SQ.FT.

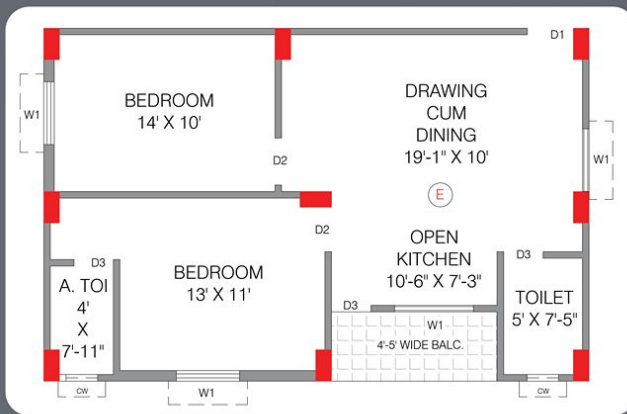
▶ **COMMON AREA**
129.88 SQ.FT.

▶ **BUILD-UP AREA**
980.68 SQ.FT.

▶ **SBA 25%**
245.17 SQ.FT.

▶ **SALEABLE AREA**
1225.85 SQ.FT.

FLAT E



- ▶ **TYPE**
2 B.H.K.
- ▶ **DIRECTION**
WEST
- ▶ **CARPET AREA**
654.00 SQ.FT.
- ▶ **COVERED AREA**
753.42 SQ.FT.
- ▶ **COMMON AREA**
115.02 SQ.FT.
- ▶ **BUILD-UP AREA**
868.43 SQ.FT.
- ▶ **SBA 25%**
217.11 SQ.FT.
- ▶ **SALEABLE AREA**
1085.54 SQ.FT.

FLAT F



▶ **TYPE**
2 B.H.K.

▶ **DIRECTION**
NORTH-WEST

▶ **CARPET AREA**
676.26 SQ.FT.

▶ **COVERED AREA**
776.87 SQ.FT.

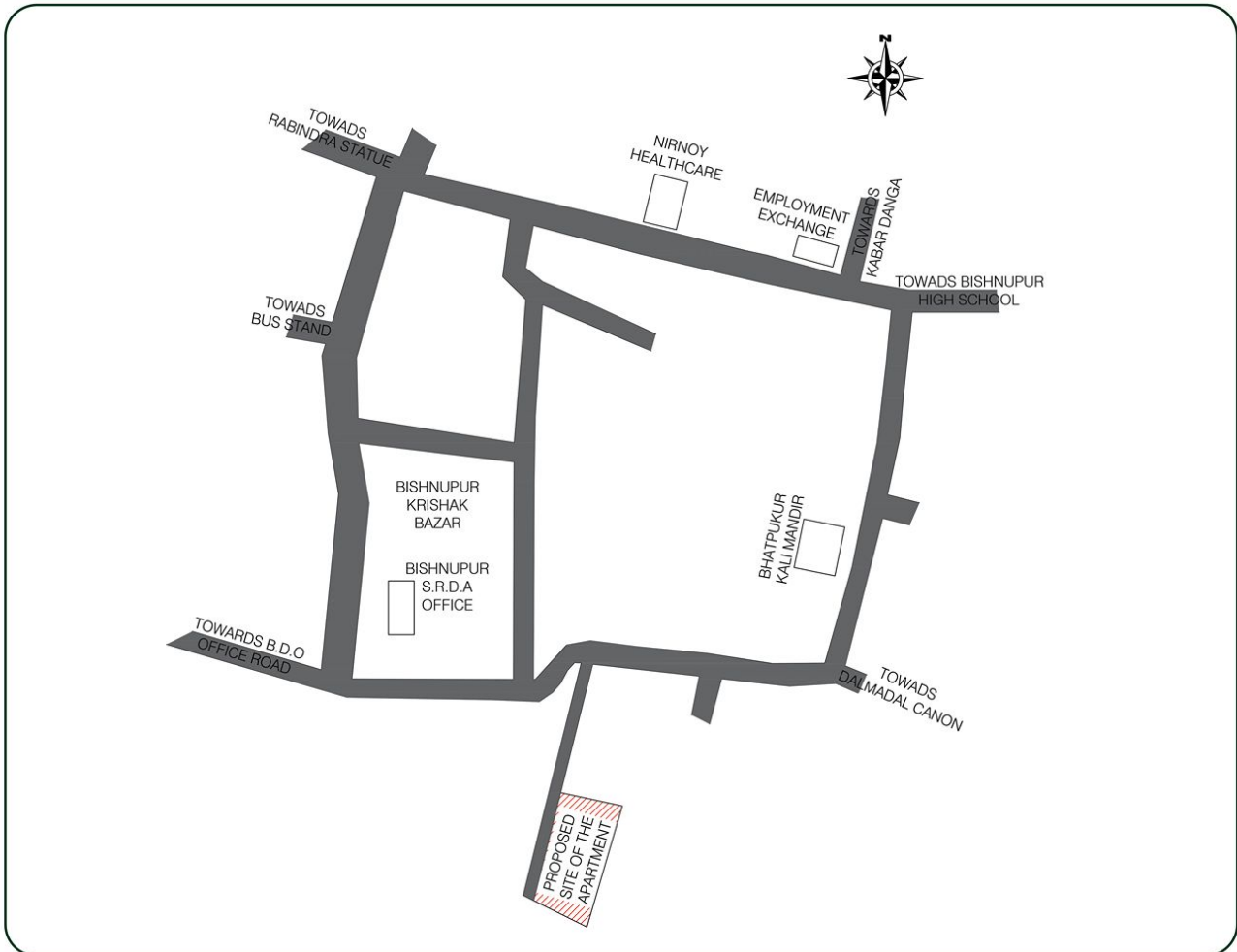
▶ **COMMON AREA**
118.60 SQ.FT.

▶ **BUILD-UP AREA**
895.47 SQ.FT.

▶ **SBA 25%**
223.87 SQ.FT.

▶ **SALEABLE AREA**
1119.34 SQ.FT.

KEY MAP



BUS STAND
750 MTR.



STATION
02.10 K.M



MEDICINE SHOP
400 MTR.



BISHNUPUR HIGH SCHOOL
800 MTR.



POLICE STATION
01.30 K.M



GYM
350 MTR.



HOSPITAL
1.10 K.M

AMENITIES

▶ 24 X 7
POWER BACKUP

▶ 24 X 7
SECURITY

▶ 24 X 7
WATER SUPPLY

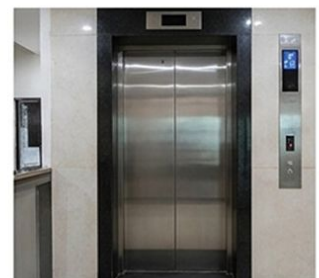
▶ TEMPLE

▶ STAINLESS STEEL FINISH FULLY
AUTOMATIC MODERN LIFT

▶ COVERED CAR
PARKING WITH
UNINTERRUPTED
DRIVEWAY

▶ GUEST PARKING

▶ LIGHTING
ARRESTER



SPECIFICATION



- **STRUCTURE –**
Earthquake Resistant R.C.C
Frame Structure



- **Balconies –**
Glass Railing with SS Frame /
Anodised Aluminium Frame



- **Doors –**
WPC Frame for Bathroom,
Modern Flush Door for rooms



- **Entire project will
made by Tata Steel**



- **Window –**
UPVC / Domal



- **Tiles –**
Kajaria or Equivalent Double
Charged Vitrified



- **Fire Protection –**
Apar Anusakti Fire Protection



- **Sanitary & Plumbing –**
Hindware & Parryware



- **Complete
Waterproofing in toilets**

Building Plan, Designed and Supervised By :



THE DREAM PROJECT
A CIVIL ENGINEERING CONSULTANCY

The Dream Project
Engg Kishalay Roy

- 📍 Hazrapara, Bishnupur, Bankura,
- ☎ 7001699498 / 9614867640
- ✉ thedreamprojectbsp@gmail.com
kishalayroyce@gmail.com

OUR CORE SERVICES:

- Building Planning
- 3D Interior & Exterior
- Design
- Estimation

OUR EXPERTISE :

- 3D Floor Planning
- Building Renovation
- Vastu Consultation
- Client-Centric Approach

MAKING DREAMS TO REALITY